

"

"

"

"

"

"

"

"

"

"

"

"

**Trichopilia tubella** Dressler, *sp. nov.* TYPE. COSTA RICA. Cartago, Turrialba, near La Suiza, collected by C.A. Bonilla, flowered in cultivation at Jardín Botánico Lankester, accession No. JBL-11126, 19 April 2005, *R.L. Dressler 5640* (holotype, USJ; isotype, JBL-Spirit). Fig. 2.

*A Trichopiliae turrialbae Rchb.f. floribus multo minoribus, labelli longitudine quam sepalis lateralibus insigniter longiore, osmophoris laevibus recedit.*

Epiphytic, roots ca. 1 mm in diameter; pseudobulbs 2.8–6.4 × 1.2–1.7 cm, oblong to narrowly ovate, compressed, with slight “shoulders,” young sheaths green with brown specks; leaf 6.5–11 × 2–3.2 cm, ovate-oblong to oblong, short-petiolate, obtuse or abruptly apiculate; inflorescence with 1–2 flowers, peduncle 1.5–2.8 cm; ovary and pedicel *ca.* 3 cm; floral bracts to 1.9 × 1 cm, green with brown specks. Flowers creamish white, the lip suffused with yellow inside the throat; dorsal sepal 21 × 3 mm, narrowly elliptic, acute; lateral sepals united nearly to apex, 23 × 4.5 mm; petals 23 × 4 mm,

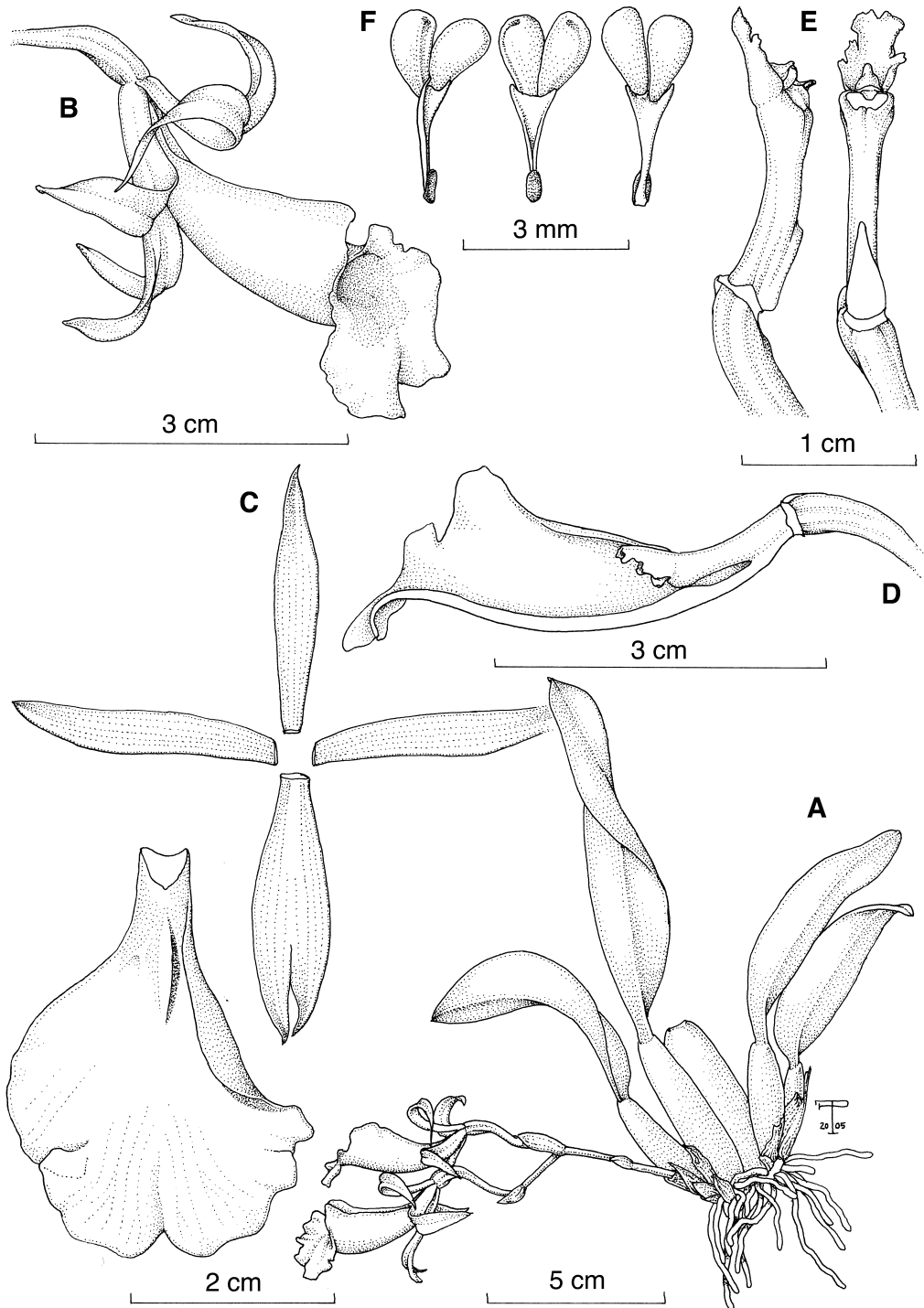


FIGURE 2. A–F, *Trichopilia tubella* Dressler. A, Habit; B, Flower; C, Dissected perianth; D, Column and lip, lateral view (the lip longitudinally sectioned); E, Column, lateral and ventral views; F, Pollinarium. Drawn from the holotype.

narrowly elliptic, acute; lip  $35 \times 22$  mm, shallowly 3-lobed; midlobe *ca.*  $6 \times 17.5$  mm; ventral outline of lip strongly convex; within with 1 median keel *ca.* 10 mm long, osmophores without keels or thickenings; column 15 mm, adnate to lip for 5–7 mm, slender basally, clinandrium 3-lobed, the midlobe *ca.* 5 mm long, the lateral lobes *ca.* 3 mm.

**Etymology:** The epithet *tubella* is the Latin diminutive for “trumpet,” referring to the form of the lip.

This tiny species was found near La Suiza de Turrialba by Bonilla, who sold plants to

Tennis Wylee, who, in turn, shared his plant with Woji Klikunas, who told Dressler of this tiny gem. *Trichopilia tubella* is one of the smallest species of *Trichopilia* Section *Trichopilia*. It is distinctive in that the area of the osmophores is quite smooth, rather like a diminutive *T. marginata* in that respect, but without a median groove. It is possible that *T. tubella* is the same species described by Cooper as *T. modesta*, though the very wide leaf of *T. olmosii*, and the number of flowers fits *T. modesta* better than it does *T. tubella*.